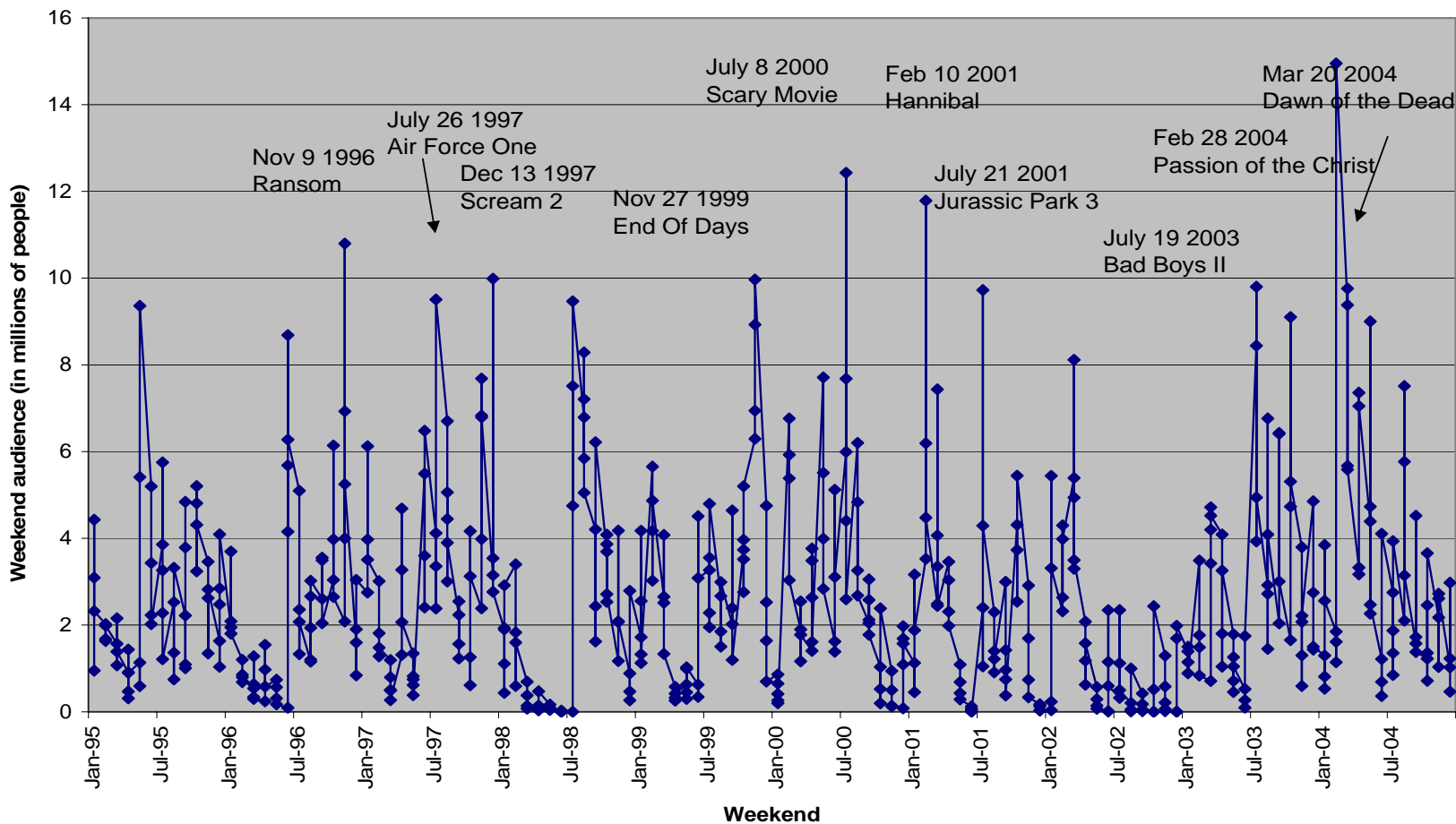
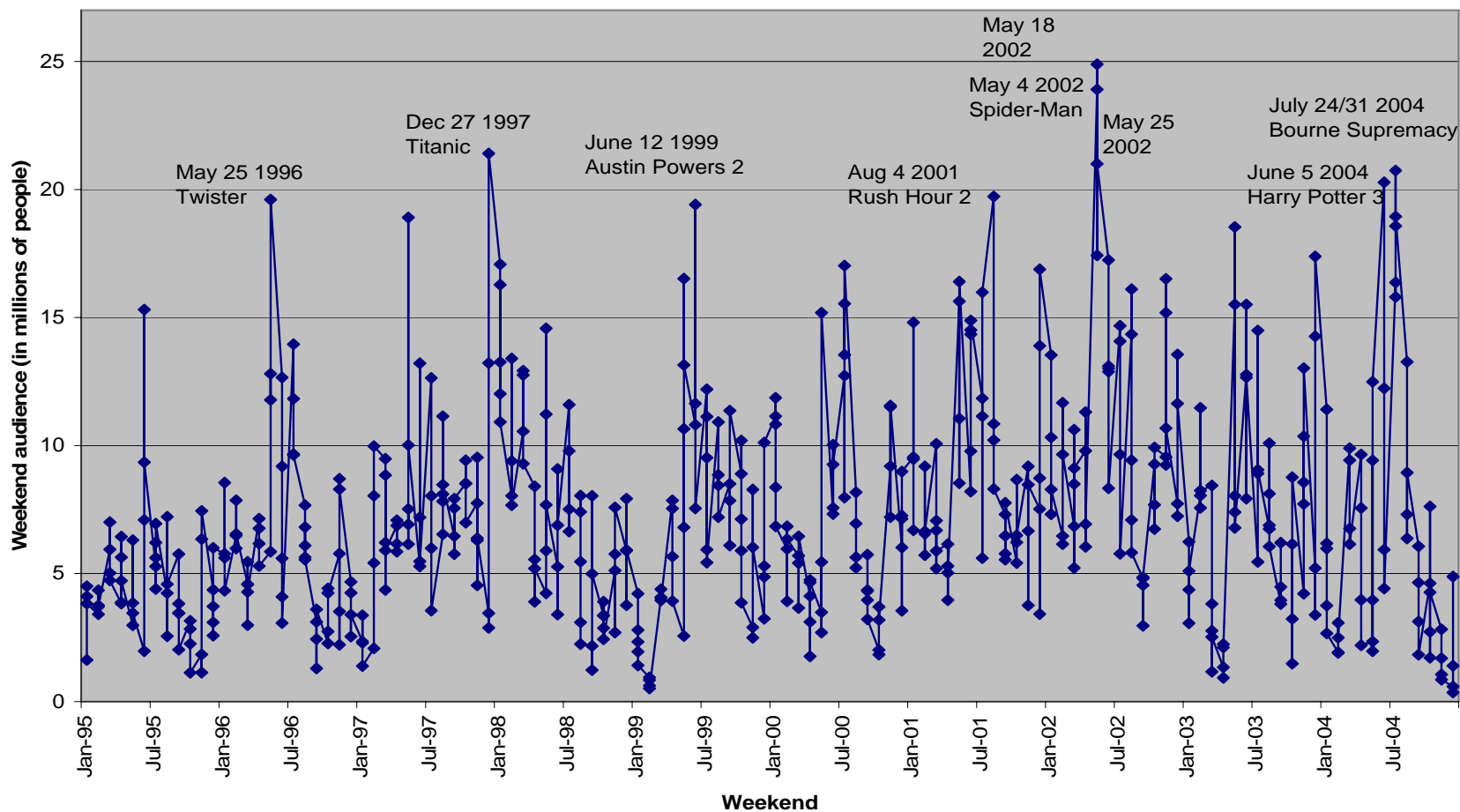


Figure 1a. Weekend Theater Audience of Strongly Violent Movies



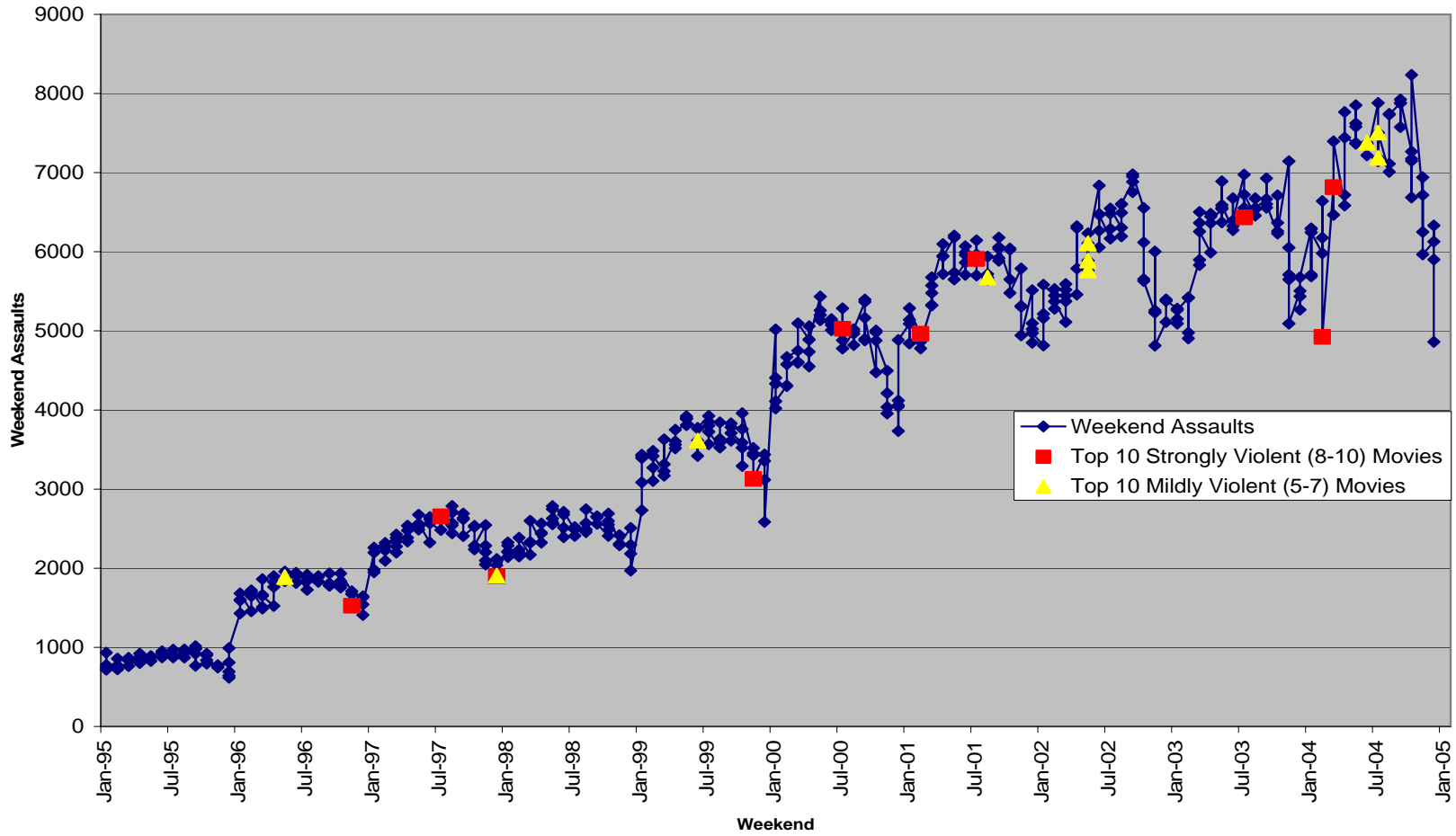
Notes: Plot of weekend (Friday through Sunday) box-office audience (in millions of people) for movies rated as strongly violent. The 10 weekends with the highest audience for strongly violent movies are labeled in the Figure. Movies are rated as strongly violent if they have a kids-in-mind.com rating 8-10. The audience data is obtained from box-office sales (from the-numbers.com) deflated by the average price of a ticket.

Figure 1b. Weekend Theater Audience of Mildly Violent Movies



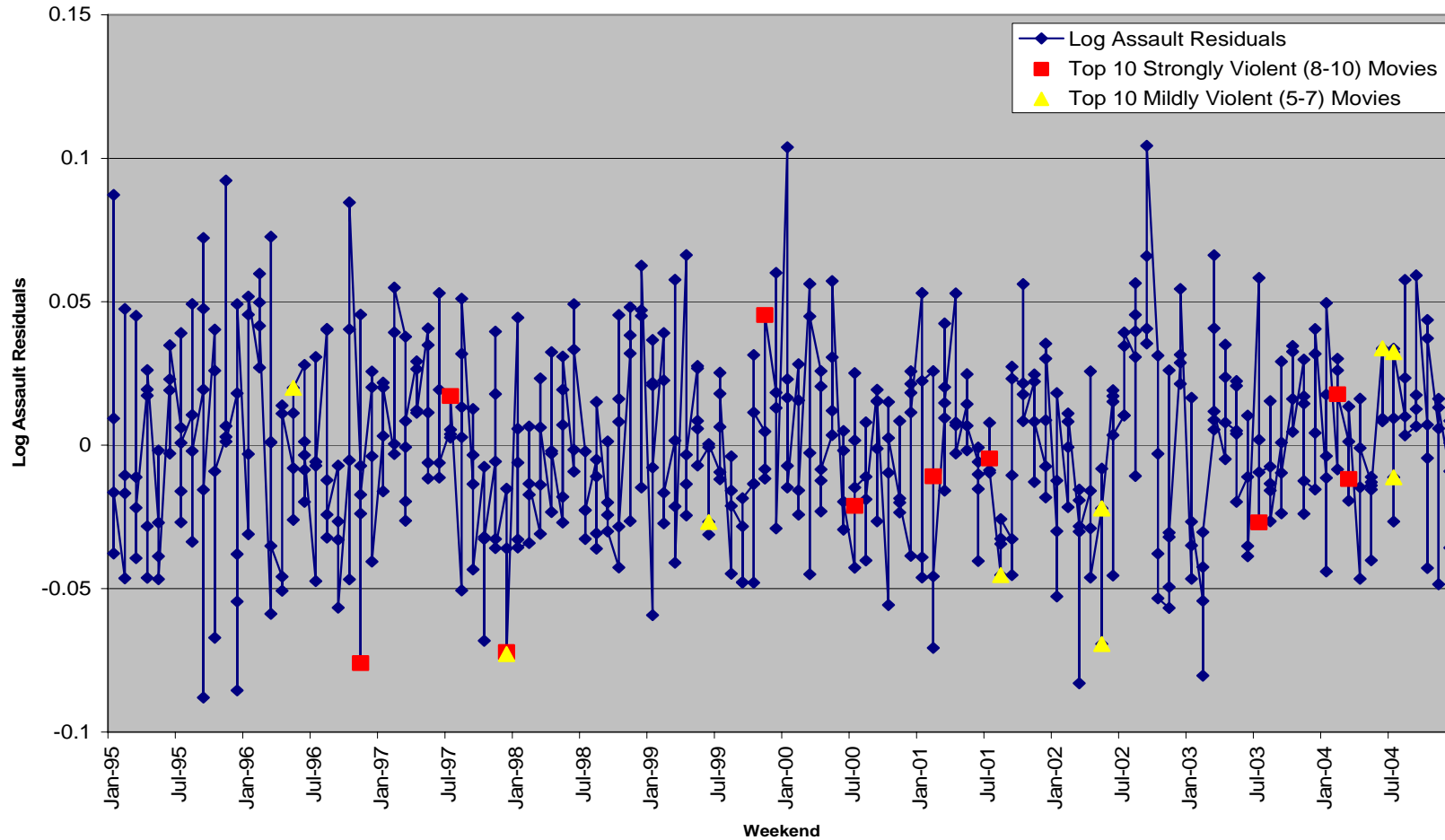
Notes: Plot of weekend (Friday through Sunday) box-office audience (in millions of people) for movies rated as mildly violent. The 10 weekends with the highest audience for mildly violent movies are labeled in the Figure. Movies are rated as mildly violent if they have a kids-in-mind.com rating 5-7. The audience data is obtained from box-office sales (from the-numbers.com) deflated by the average price of a ticket.

Figure 1c. Weekend Assaults



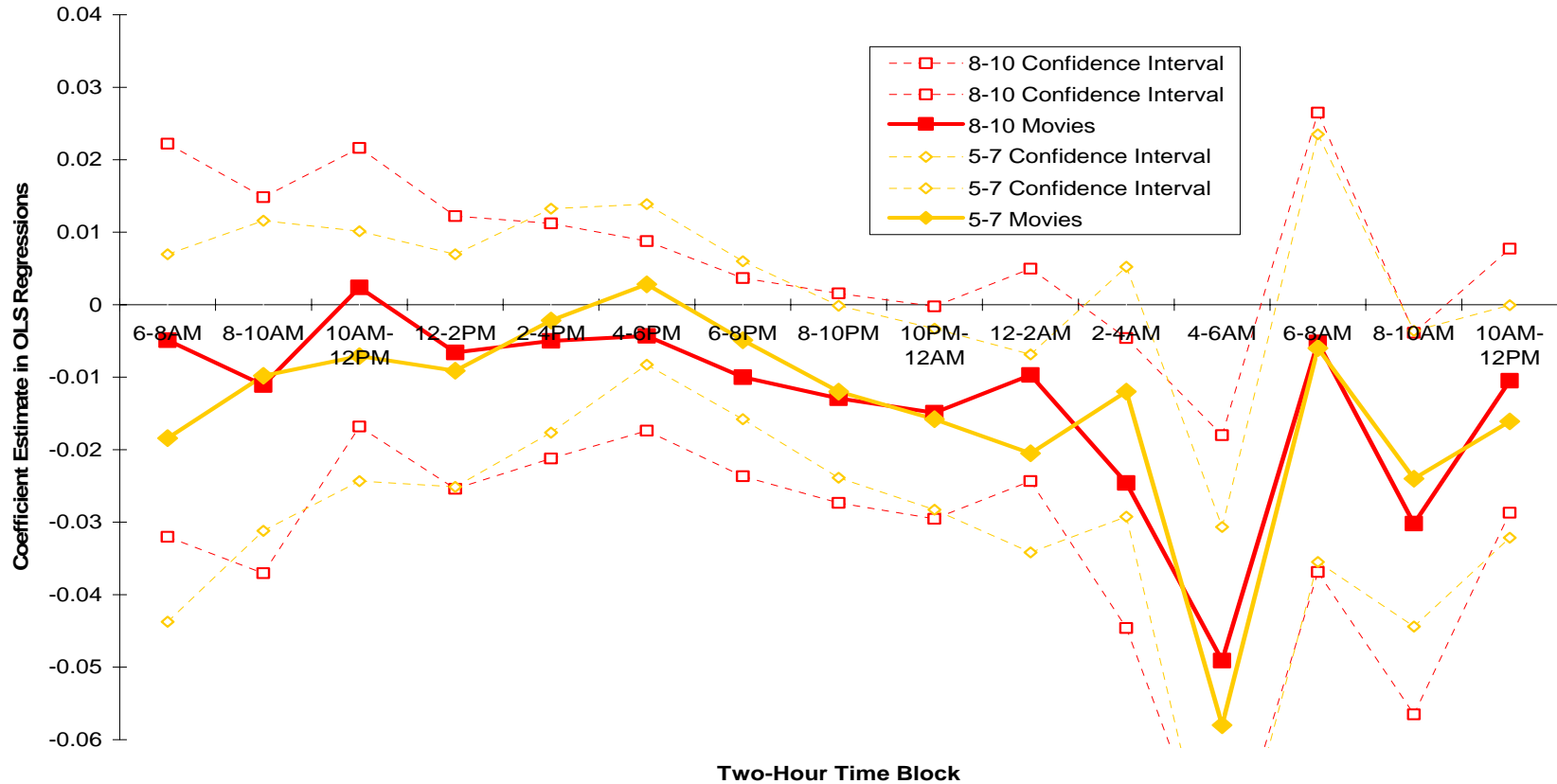
Notes: Plot of weekend (Friday through Sunday) assaults. The assault data is from NIBRS. The 10 weekends with the highest assault rates are listed in the Figure, together with the 10 weekends with the highest strong movie violence audience (Figure 1a) and the 10 weekends with the highest mild movie violence audience (Figure 1b).

Figure 1d. Residuals of Regression of Log Assault on Seasonality Controls



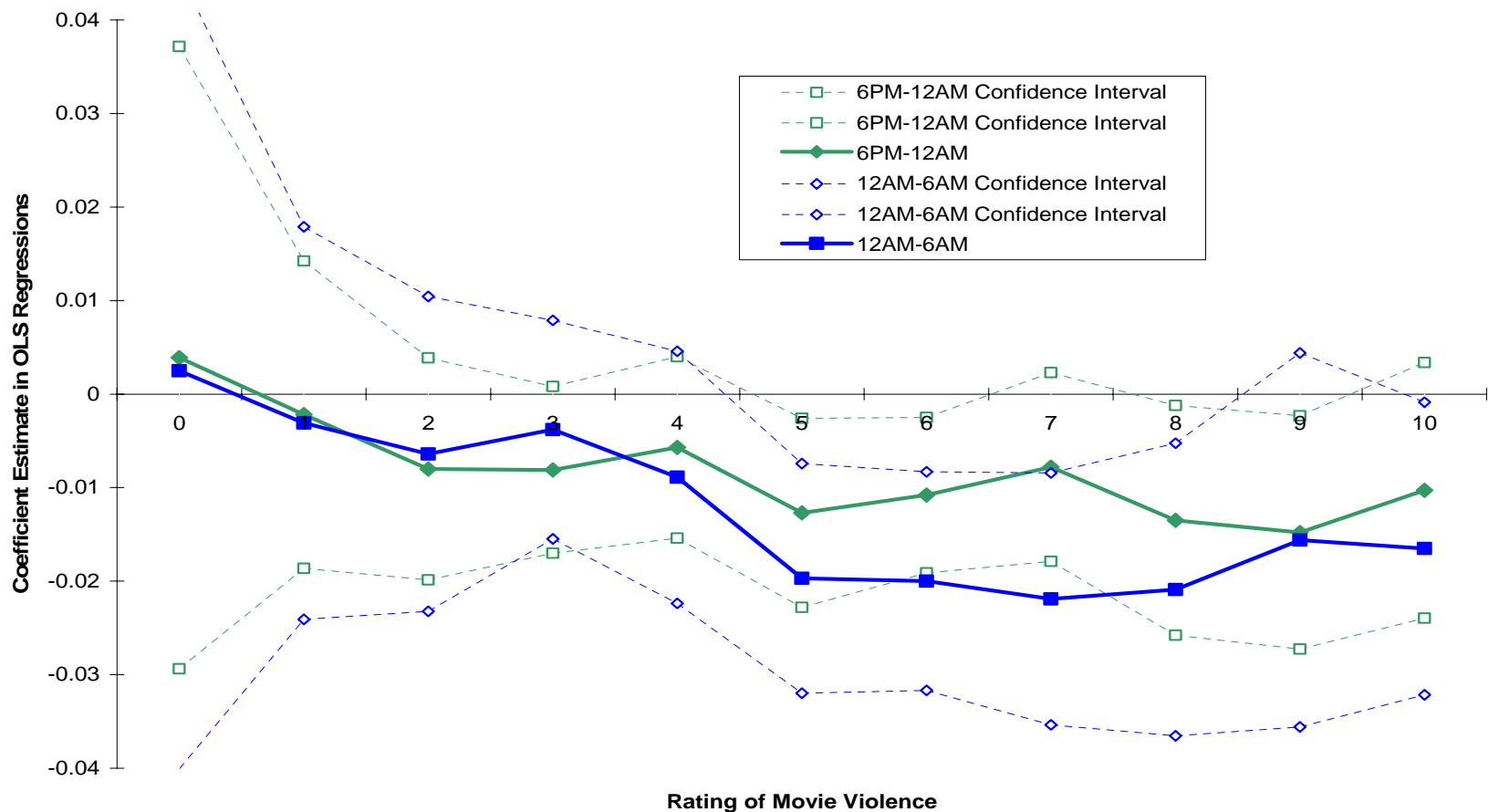
Notes: Plot of residuals of log weekend (Friday through Sunday) assaults after controlling for seasonality, holidays, and weather controls. The assault data is from NIBRS. The 10 weekends with the highest assault rates are listed in the Figure, together with the 10 weekends with the highest strong movie violence audience (Figure 1a) and the 10 weekends with the highest mild movie violence audience (Figure 1b).

Figure 2. Effect of Movie Violence By Two-Hour Time Blocks



Notes: Plot of coefficient from separate regressions of log (assaults) in two-hour time block (X axis) on daily audience for strongly violent movies (red line) and daily audience for mildly violent movies (orange line), controlling for daily total movie audience (coefficients not shown). The data spans until 12PM the day after the movie exposure. The plot also shows 95% confidence intervals. The coefficients can be interpreted as the percent change in assaults for an increase of one million in the audience for violent movies, holding constant the total movie audience. Movies are rated as strongly violent (mildly violent) if they have a kids-in-mind.com rating 8-10 (5-7). The audience data is obtained from box office sales (from the-numbers.com) deflated by the average price of a ticket.

Figure 3. Effect of Movie Violence by 0-10 Violence Rating



Notes: Plot of coefficients from OLS regression of log (assaults) on 11 variables for the daily audience for movies rated of violence level v ($v=0,1,\dots,10$ on the right axis) The regressions are run separately for assaults in the 6PM-12AM and 12AM-6AM time period. The plot also shows 95% confidence intervals. The coefficients can be interpreted as the percent change in assaults for an increase of one million in the audience for movies of violence v . The violence rating of movies is from kids-in-mind.com. The audience data is obtained from box office sales (from the-numbers.com) deflated by the average price of a ticket.

Table 1. Summary Statistics

Assault Data For All Days	Assaults (per day)			
	Entire Day	6AM to 6PM	6PM to 12AM	12AM to 6AM
	(1)	(2)	(3)	(4)
Weekend (Friday - Sunday)	1398	548	509	341
Friday	1526	591	520	416
Saturday	1503	536	534	432
Sunday	1165	518	472	175
Weekday (Monday - Thursday)	1244	584	461	198
Assault Data For Weekends (Friday - Sunday)	Share of weekend assaults in category			
By gender of offender				
Share with Male Offender	0.749	0.727	0.751	0.781
By age of offender				
Share with offender of age 13 to 17	0.103	0.130	0.109	0.049
Share with offender of age 18 to 29	0.365	0.329	0.346	0.451
Share with offender of age 30 to 44	0.313	0.306	0.327	0.303
Alcohol-related assaults				
Share with offender suspected of using alcohol	0.153	0.069	0.167	0.268
Share of assaults taking place at a bar	0.035	0.006	0.025	0.097
By severity of assault				
No apparent physical injury	0.374	0.389	0.383	0.336
Minor injury	0.409	0.371	0.411	0.467
Majory injury	0.053	0.034	0.053	0.082
Number of Observations	N = 1,563 days (4,602,813 assaults)			
	Movie Audience (in millions of tickets / rentals)			
	Theater Audience	VHS/DVD rentals		
	(5)	(6)		
Movie Audience Data For All Days				
Weekend (Friday - Sunday)	6.31	3.98		
Friday	5.75	4.18		
Saturday	7.91	4.88		
Sunday	5.27	2.86		
Weekday (Monday - Thursday)	2.01	2.12		
Movie Audience Data For Weekends (Friday - Sunday)				
By Kids-in-Mind rating				
Strongly violent	0.87	0.64		
Mildly violent	2.43	1.56		
Non violent	2.99	1.72		
Strong Sexual Content	0.19			
Mild Sexual Content	1.37			
Minimal Sexual Content	4.72			
By alternative MPAA rating				
Strongly violent	0.48			
Mildly violent	2.19			
Non violent	3.65			

Notes: An observation is a day over the years 1995-2004. The sample includes agencies that report a crime in at least 12 months of a year and for at least 300 days in that year. The movie audience numbers are obtained from daily box-office revenue divided by the average price per ticket. The ratings of violent movies are from www.kids-in-mind.com. The audience of mildly violent movies is the audience of all movies with a violence rating 5-7. The audience of strongly violent movies is the audience of all movies with a violence rating 8-10. The alternative MPAA rating is based on the presence of key words used to describe why a movie received a certain rating by the MPAA.

Table 2. Patterns of Movie Attendance By Demographics (CEX Data)

Specification: Dep. Var.:	OLS Regressions							
	Percent of Households Interviewed Watching a Movie in Day t							
	(1)	(2)	(3)	(4)	(5)	(6)	(7)	(8)
Audience Of Strongly Violent Movies (in 100 millions of people in Day t)	0.3279 (0.0674)***	0.7094 (0.1973)***	0.4049 (0.1186)***	0.1517 (0.0924)	0.3001 (0.0861)***	0.3552 (0.1028)***	0.9589 (0.5147)*	-0.0717 (0.8170)
Audience Of Mildly Violent Movies (in 100 millions of people in Day t)	0.2643 (0.0498)***	0.5192 (0.1549)***	0.5047 (0.0930)***	0.0434 (0.0600)	0.1643 (0.0654)**	0.3543 (0.0734)***	0.9853 (0.4668)**	0.0758 (0.7588)
Audience Of Non-Violent Movies (in 100 millions of people in Day t)	0.2602 (0.0511)***	0.3776 (0.1641)**	0.3984 (0.0889)***	0.1396 (0.0615)**	0.1092 (0.0743)	0.3973 (0.0703)***	0.1049 (0.4608)	-0.6641 (0.6671)
Audience Of Movies Highly Liked by Young Males (IMDB) (in millions of people in day t)								0.6427 (0.5725)
Audience Of Movies Liked by Young Males (IMDB) (in millions of people in day t)								1.1412 (0.6107)*
Demographic Groups (By Head of Household)	All	Age 15-29	Age 30-44	Age 45+	Low Inc.	High Inc.	15-29 males	15-29 males
Full Set of Controls	X	X	X	X	X	X	X	X
Regressions Weighted by Number of Households Interviewed in Day t	X	X	X	X	X	X	X	X
Average Number of Households in Demographic Group Interviewed on Day t	157.88	22.61	53.94	81.29	79.05	78.8	3.96	3.96
N	N = 1563	N = 1558	N = 1560	N = 1563	N = 1563	N = 1563	N = 1477	N = 1477

Notes: An observation is a Friday, Saturday, or Sunday over the years 1995-2004. The dependent variable is the share of the households in the diary CEX sample that reported attending a movie on day t. The audience numbers are obtained from daily box-office revenue divided by the average price per ticket. The ratings of violent movies are from www.kids-in-mind.com. The audience of strongly violent movies is the audience of all movies with a violence rating 8-10. The audience of mildly violent movies is the audience of all movies with a violence rating 5-7. The specifications in Columns (2)-(7) are IV regressions where the theater audience is instrumented using the predicted audience numbers based on next weekend's audience. Details on the construction of the predicted audience numbers are in the text. The regression is weighted by the number of households interviewed in day t. Robust standard errors clustered by week in parenthesis.

* significant at 10%; ** significant at 5%; *** significant at 1%

Table 3. The Effect of Movie Violence on Same-Day Assaults

Specification:	OLS Regressions						IV Regressions
Dep. Var.:	Log (Number of Assaults in Day t)						
	(1)	(2)	(3)	(4)	(5)	(6)	(7)
Audience Of Strongly Violent Movies (in millions of people in Day t)	0.0323 (0.0053)***	0.0004 (0.0053)	-0.0058 (0.0033)*	-0.0053 (0.0033)	-0.0072 (0.0034)**	-0.0093 (0.0027)***	-0.0112 (0.0032)***
Audience Of Mildly Violent Movies (in millions of people in Day t)	0.0244 (0.0030)***	0.0016 (0.0029)	-0.0086 (0.0020)***	-0.0048 (0.0027)*	-0.0062 (0.0028)**	-0.0084 (0.0022)***	-0.0109 (0.0028)***
Audience Of Non-Violent Movies (in millions of people in Day t)	0.0083 (0.0029)***	-0.0163 (0.0030)***	-0.0062 (0.0020)***	-0.0026 (0.0024)	-0.003 (0.0027)	-0.0037 (0.0024)	-0.0055 (0.0030)*
Control Variables:							
Year Indicators	X	X	X	X	X	X	X
Day-of-Week Indicators		X	X	X	X	X	X
Month Indicators			X	X	X	X	X
Day-of-Year Indicators				X	X	X	X
Holiday Indicators					X	X	X
Weather Controls						X	X
F-Test on Additional Controls	F=2022.91	F=1309.68	F=84.42	F=10.56	F=11.13	F=18.19	
Audience Instrumented With Predicted Audience Using Next Weekend's Audience							X
R²	0.9373	0.972	0.9848	0.9904	0.9912	0.993	.
N	N = 1563	N = 1563	N = 1563	N = 1563	N = 1563	N = 1563	N = 1563

Notes: An observation is a Friday, Saturday, or Sunday over the years 1995-2004. The total number of assaults is computed using all agencies with population of at least 25,000 and reporting crimes in at least 300 days in the year. The audience numbers are obtained from daily box-office revenue divided by the average price per ticket. The ratings of violent movies are from www.kids-in-mind.com. The audience of strongly violent movies is the audience of all movies with a violence rating 8-10. The audience of mildly violent movies is the audience of all movies with a violence rating 5-7. The specifications in Columns (1) through (6) are OLS regressions with the log(number of assault occurring in day t) as dependent variable. The specification in Column (7) the audience numbers are instrumented using the predicted audience numbers based on next weekend's audience. Details on the construction of the predicted audience numbers are in the text. Robust standard errors clustered by week in parenthesis.

* significant at 10%; ** significant at 5%; *** significant at 1%

Table 4. The Effect of Movie Violence on Same-Day Assaults by Time of Day.

Panel A. Benchmark Results

Specification:	Instrumental Variable Regressions			
Dep. Var.:	Log (Number of Assaults in Day t in Time Window)			
	(1)	(2)	(3)	(4)
Audience Of Strongly Violent Movies (in millions of people in Day t)	-0.0045 (0.0069)	-0.0058 (0.0051)	-0.0134 (0.0048)***	-0.0172 (0.0062)***
Audience Of Mildly Violent Movies (in millions of people in Day t)	-0.0104 (0.0064)	-0.0026 (0.0045)	-0.0115 (0.0040)***	-0.0196 (0.0054)***
Audience Of Non-Violent Movies (in millions of people in Day t)	-0.0023 (0.0063)	-0.0006 (0.0048)	-0.0068 (0.0043)	-0.0056 (0.0056)
Time of Day	6AM-12PM	12PM-6PM	6PM-12AM	12AM-6AM next day
Control Variables:				
Full Set of Controls	X	X	X	X
Predicted Audience Using Next Week's Audience	X	X	X	X
N	N = 1563	N = 1563	N = 1563	N = 1563

Panel B. First Stage

Specification:	IV Regression, First Stage		
Dep. Var.:	Audience of Strongly Violent Movies	Audience of Mildly Violent Movies	Audience of Non Violent Movies
	(1)	(2)	(3)
Pred. Audience Of Strongly Violent Movies (in millions of people in Day t)	0.9145 (0.0196)***	-0.1431 (0.0209)***	-0.1694 (0.0280)***
Pred. Audience Of Mildly Violent Movies (in millions of people in Day t)	-0.0399 (0.0101)***	0.8532 (0.0255)***	-0.1817 (0.0296)***
Pred. Audience Of Non-Violent Movies (in millions of people in Day t)	-0.0480 (0.0096)***	-0.1363 (0.0194)***	0.8138 (0.0309)***
Control Variables:			
Full Set of Controls	X	X	X
F-Test on Instruments	F = 1050.89	F = 889.02	F = 730.85
N	N = 1563	N = 1563	N = 1563

Notes: An observation is a Friday, Saturday, or Sunday over the years 1995-2004. The total number of assaults is computed using all agencies with population of at least 25,000 and reporting crimes in at least 300 days in the year. The audience numbers are obtained from daily box-office revenue divided by the average price per ticket. The ratings of violent movies are from www.kids-in-mind.com. The audience of strongly violent movies is the audience of all movies with a violence rating 8-10. The audience of mildly violent movies is the audience of all movies with a violence rating 5-7. The specifications are IV regressions with the log(number of assault occurring in day t) as dependent variable. The audience numbers are instrumented using the predicted audience numbers based on next weekend's audience. Details on the construction of the predicted audience numbers are in the text. Robust standard errors clustered by week in parenthesis.

* significant at 10%; ** significant at 5%; *** significant at 1%

Table 5. Alternative Measures of Movie Violence and Measures of Sexual Content

Specification: Dep. Var.:	Instrumental Variable Regressions							
	Log (Number of Assaults in Day t in Time Window)							
	(1)	(2)	(3)	(4)	(5)	(6)	(7)	(8)
Audience Of Strongly Violent Movies - MPAA Meas. (in millions of people in day t)	-0.0142 (0.0061)**	-0.0211 (0.0070)***	-0.0009 (0.0063)	-0.0074 (0.0084)				
Audience Of Mildly Violent Movies - MPAA Meas. (in millions of people in day t)	-0.0118 (0.0038)***	-0.0182 (0.0052)***	-0.0014 (0.0027)	-0.0039 (0.0038)				
Audience Of Non-Violent Movies - MPAA Meas. (in millions of people in day t)	-0.0079 (0.0042)*	-0.0091 (0.0055)*						
Audience Of Movies With Strong Sexual Content (in millions of people in day t)					-0.0165 (0.0070)**	-0.0283 (0.0102)***	-0.0065 (0.0061)	-0.014 (0.0090)
Audience Of Movies With Mild Sexual Content (in millions of people in day t)					-0.0144 (0.0048)***	-0.0171 (0.0069)**	-0.0037 (0.0033)	-0.0002 (0.0045)
Audience Of Movies With Minimal Sexual Content (in millions of people in day t)					-0.0098 (0.0038)**	-0.0142 (0.0051)***		
Audience Of Strongly Violent Movies - Stand. Meas. (in millions of people in day t)			-0.0128 (0.0059)**	-0.0127 (0.0080)			-0.0125 (0.0048)***	-0.0166 (0.0062)***
Audience Of Mildly Violent Movies - Stand. Meas. (in millions of people in day t)			-0.0106 (0.0046)**	-0.0167 (0.0063)***			-0.0107 (0.0040)***	-0.0193 (0.0053)***
Theater Audience Of Non-Violent Movies (in millions of people in day t)			-0.0064 (0.0044)	-0.0058 (0.0057)			-0.0063 (0.0043)	-0.0052 (0.0056)
Time of Day	6PM-12AM	12AM-6AM next day	6PM-12AM	12AM-6AM next day	6PM-12AM	12AM-6AM next day	6PM-12AM	12AM-6AM next day
Control Variables:								
Full Set of Controls	X	X	X	X	X	X	X	X
Audience Instrumented With Predicted Audience Using Next Week's Audience	X	X	X	X	X	X	X	X
N	N = 1539	N = 1538	N = 1539	N = 1538	N = 1563	N = 1562	N = 1563	N = 1562

Notes: An observation is a Friday, Saturday, or Sunday over the years 1995-2004. The total number of assaults is computed using all agencies with population of at least 25,000 and reporting crimes in at least 300 days in the year. The audience numbers are obtained from daily box-office revenue divided by the average price per ticket. The MPAA ratings are obtained using the one-line MPAA summary of the movie. We characterize as mildly violent movies for which the MPAA Rating contains the word "Violence" of "Violent", with two exceptions: (i) If the reference to reference is qualified by "Brief", "Mild", or "Some", we classify the movie as non-violent; (ii) If the word violence is qualified by either "Bloody", "Brutal", "Disturbing", "Graphic", "Grisly", "Gruesome", or "Strong", we classify the movie as strongly violent. The standard ratings of violent movies are from www.kids-in-mind.com. The audience of strongly violent movies is the audience of all movies with a violence rating 8-10. The audience of mildly violent movies is the audience of all movies with a violence rating 5-7. The specifications are IV regressions with the log(number of assault occurring in day t) as dependent variable. The audience numbers are instrumented using the predicted audience numbers based on next weekend's audience. Details on the construction of the predicted audience numbers are in the text. Robust standard errors clustered by week in parenthesis.

* significant at 10%; ** significant at 5%; *** significant at 1%

Table 6. Placebo Specifications

Specification:	Placebo IV Regressions								
Dep. Var.:	Log (Number of Assaults in Day t in Placebo Matched Year)			Log (Number of Assaults in Day t)					
	(1)	(2)	(3)	(4)	(5)	(6)	(7)	(8)	(9)
Audience Of Strongly Violent Movies (in millions per day in day t)	0.0097 (0.0053)*	0.0082 (0.0062)	0.0181 (0.0083)**	-0.0027 (0.0051)	-0.0109 (0.0053)**	-0.0157 (0.0070)**	-0.0047 (0.0048)	-0.0132 (0.0048)***	-0.0185 (0.0063)***
Audience Of Mildly Violent Movies (in millions per day in day t)	0.008 (0.0047)*	0.0063 (0.0045)	0.0064 (0.0065)	-0.004 (0.0047)	-0.0104 (0.0044)**	-0.018 (0.0059)***	-0.0049 (0.0043)	-0.0105 (0.0039)***	-0.0182 (0.0054)***
Audience Of Non-Violent Movies (in millions per day in day t)	0.0064 (0.0046)	0.0042 (0.0047)	0.0067 (0.0064)	0.0013 (0.0048)	-0.0062 (0.0049)	-0.0068 (0.0064)	-0.0007 (0.0044)	-0.0075 (0.0043)*	-0.0079 (0.0058)
Audience Of Strongly Violent Movies On Later Date (in millions per day in day t) (Placebo)				-0.0072 (0.0046)	-0.0067 (0.0051)	-0.0043 (0.0066)	-0.004 (0.0043)	0.0008 (0.0045)	0.0065 (0.0061)
Audience Of Mildly Violent Movies On Later Date (in millions per day in day t) (Placebo)				-0.0064 (0.0040)	-0.0058 (0.0038)	-0.0057 (0.0060)	-0.0026 (0.0035)	0.0002 (0.0036)	0.001 (0.0047)
Audience Of Non-Violent Movies On Later Date (in millions per day in day t) (Placebo)				-0.0088 (0.0039)**	-0.0039 (0.0041)	0.0001 (0.0063)	-0.0023 (0.0035)	0.0062 (0.0037)*	0.0123 (0.0054)**
Placebo	Audience On Same Date in Placebo Year			Audience 14 Days Later			Audience 21 Days Later		
Time of Day	6AM-6PM	6PM-12AM	12AM-6AM next day	6AM-6PM	6PM-12AM	12AM-6AM next day	6AM-6PM	6PM-12AM	12AM-6AM next day
Control Variables:									
Full Set of Controls	X	X	X	X	X	X	X	X	X
Sub-Sample of Placebo Specification	X	X	X						
Audience Instrumented With Predicted Audience Using Following Week's Audience	X	X	X	X	X	X	X	X	X
N	N = 1200	N = 1200	N = 1199	N = 1556	N = 1556	N = 1555	N = 1553	N = 1553	N = 1552

Notes: An observation is a Friday, Saturday, or Sunday over the years 1995-2004. The total number of assaults is computed using all agencies with population of at least 25,000 and reporting crimes in at least 300 days in the year. The audience numbers are obtained from daily box-office revenue divided by the average price per ticket. The ratings of violent movies are from www.kids-in-mind.com. The audience of strongly violent movies is the audience of all movies with a violence rating 8-10. The audience of mildly violent movies is the audience of all movies with a violence rating 5-7. We generate a placebo data set by re-assigning the assault measure to the other date in the sample that falls on both the same day-of-year and the same day-of-week (if such date exists). This correspondence is complicated by the presence of February 29 in leap years. For example, all dates between January 1 and February 28 of 1996 are matched to the corresponding date in 2001 (and viceversa). All dates between March 1 and December 31 in 1996, instead, are matched to the corresponding date in 2002 (and viceversa).

The specifications in Columns 4-6 are Placebo IV regressions with the log(number of assault occurring in day t in Placebo-matched year) as dependent variable. The audience numbers are instrumented using the predicted audience numbers based on next weekend's audience. Details on the construction of the predicted audience numbers are in the text. The specifications in Columns 1-3 are standard IV regressions on the subsample over which the placebo regressions are run. Robust standard errors clustered by week in parenthesis.

* significant at 10%; ** significant at 5%; *** significant at 1%

Table 7. Medium-Run Effect of Movie Violence

Specification:	OLS Regressions							
Dep. Var.:	Log (Number of Assaults On Monday and Tuesday in Time Window)		Log (Number of Assaults in Day t in Time Window)					
	(1)	(2)	(3)	(4)	(5)	(6)	(7)	(8)
Audience Of Strongly Violent Movies In Weekend (in millions of people in day t)	0.0019 (0.0049)	0.0066 (0.0074)						
Audience Of Mildly Violent Movies In Weekend (in millions of people in day t)	-0.0054 (0.0036)	-0.0038 (0.0057)						
Audience Of Non-Violent Movies In Weekend (in millions of people in day t)	0.0048 (0.0041)	0.0039 (0.0058)						
Audience Of Strongly Violent Movies (in millions of people in day t)			-0.0122 (0.0043)***	-0.0071 (0.0061)	-0.0111 (0.0040)***	-0.0085 (0.0058)	-0.0106 (0.0039)***	-0.0084 (0.0056)
Audience Of Mildly Violent Movies (in millions of people in day t)			-0.0067 (0.0031)**	-0.0082 (0.0044)*	-0.0065 (0.0030)**	-0.0065 (0.0042)	-0.0076 (0.0030)**	-0.0076 (0.0042)*
Audience Of Non-Violent Movies (in millions of people in day t)			-0.0033 (0.0033)	0.0041 (0.0052)	-0.0033 (0.0032)	0.004 (0.0047)	-0.0039 (0.0031)	0.0042 (0.0045)
Date (in millions of people in day t)			0.0034 (0.0042)	-0.0005 (0.0055)	-0.0001 (0.0041)	-0.0016 (0.0048)	0.0046 (0.0037)	-0.0038 (0.0048)
Audience Of Mildly Violent Movies At Previous Date (in millions of people in day t)			-0.0014 (0.0026)	0.0001 (0.0038)	-0.0031 (0.0028)	-0.0073 (0.0036)**	0.0029 (0.0024)	-0.0084 (0.0037)**
Audience Of Non-Violent Movies At Previous Date (in millions of people in day t)			0 (0.0029)	0.0015 (0.0043)	-0.0011 (0.0029)	-0.0018 (0.0038)	0.0043 (0.0027)	-0.0048 (0.0036)
Days Before in Lag Specification			Lag: 7 Days Before		Lag: 14 Days Before		Lag: 21 Days Before	
Time of Day	6PM-12AM	12AM-6AM next day	6PM-12AM	12AM-6AM next day	6PM-12AM	12AM-6AM next day	6PM-12AM	12AM-6AM next day
Control Variables:								
Full Set of Controls	X	X	X	X	X	X	X	X
Audience Instrumented With Predicted Audience Using Following Week's Audience	No	No	No	No	No	No	No	No
N	N = 1523	N = 1522	N = 1523	N = 1522	N = 1523	N = 1522	N = 1523	N = 1522

Notes: An observation is a Friday, Saturday, or Sunday over the years 1995-2004. The total number of assaults is computed using all agencies with population of at least 25,000 and reporting crimes in at least 300 days in the year. The audience numbers are obtained from daily box-office revenue divided by the average price per ticket. The standard ratings of violent movies are from www.kids-in-mind.com. The audience of strongly violent movies is the audience of all movies with a violence rating 8-10. The audience of mildly violent movies is the audience of all movies with a violence rating 5-7. The specifications are IV regressions with the log(number of assault occurring in day t) as dependent variable. The audience numbers are instrumented using the predicted audience numbers based on next weekend's audience. Details on the construction of the predicted audience numbers are in the text. Robust standard errors clustered by week in parenthesis.

* significant at 10%; ** significant at 5%; *** significant at 1%

Table 8. The Effect of DVD/VHS Movie Violence on Same-Day Assaults

Specification: Dep. Var.:	Instrumental Variable Regressions					
	Log (Number of Assaults in Day t in Time Window)					
	(1)	(2)	(3)	(4)	(5)	(6)
DVD/VHS Rentals Of Strongly Violent Movies (in millions of people in day t)	-0.0023 (0.0063)	-0.0066 (0.0068)	-0.0104 (0.0082)	-0.0022 (0.0106)	-0.0025 (0.0107)	-0.0078 (0.0130)
DVD/VHS Rentals Of Mildly Violent Movies (in millions of people in day t)	-0.0031 (0.0064)	-0.0152 (0.0054)***	-0.0304 (0.0075)***	0.0004 (0.0110)	-0.0231 (0.0093)**	-0.0175 (0.0108)
DVD/VHS Rentals Of Non-Violent Movies (in millions of people in day t)	0 (0.0071)	-0.0038 (0.0062)	-0.0187 (0.0081)**	-0.0022 (0.0121)	-0.0047 (0.0107)	-0.0164 (0.0121)
Theater Audience Of Strongly Violent Movies (in millions of people in day t)				-0.0002 (0.0087)	-0.008 (0.0076)	-0.015 (0.0096)
Theater Audience Of Mildly Violent Movies (in millions of people in day t)				0.0018 (0.0080)	-0.011 (0.0070)	-0.0172 (0.0087)**
Theater Audience Of Non-Violent Movies (in millions of people in day t)				0.0031 (0.0082)	-0.0035 (0.0071)	-0.0058 (0.0086)
Time of Day	6AM-6PM	6PM-12AM	12AM-6AM next day	6AM-6PM	6PM-12AM	12AM-6AM next day
Control Variables:						
Full Set of Controls	X	X	X	X	X	X
Audience Instrumented With Predicted Audience Using Next Week's Audience	X	X	X	X	X	X
N	N = 1475	N = 1475	N = 1475	N = 1475	N = 1475	N = 1475

Notes: An observation is a Friday, Saturday, or Sunday over the years 1995-2004. The total number of assaults is computed using all agencies with population of at least 25,000 and reporting crimes in at least 300 days in the year. The daily audience numbers are computed from weekly data on DVD and VHS rental revenue from Video Store Magazine. The weekly revenue is divided by the average price of a rental and proportionately attributed to the Friday, Saturday, and Sunday using the average within-week distribution of rentals in the CEX diaries. The standard ratings of violent movies are from www.kids-in-mind.com. The audience of strongly violent movies is the audience of all movies with a violence rating 8-10. The audience of mildly violent movies is the audience of all movies with a violence rating 5-7. The specifications are IV regressions with the log(number of assault occurring in day t) as dependent variable. The audience numbers are instrumented using the predicted audience numbers based on next weekend's audience. Details on the construction of the predicted audience numbers are in the text. Robust standard errors clustered by week in parenthesis.

* significant at 10%; ** significant at 5%; *** significant at 1%

Table 9. Movie Blockbusters by IMDB Rating and Violence.

Violence Rating (1)		Blockbuster Movies Not Liked by Young Males (Date, Audience) (2)	Blockbuster Movies Liked by Young Males (Date, Audience) (3)	Blockbuster Movies Highly Liked by Young Males (Date, Audience) (4)
0-4 Non-Violent Movies	Top 1	Harry Potter And The Chamber Of Secrets (11/15/02, 15.2m)	Shrek 2 (11/16/01, 17.4m)	Austin Powers In Goldmember (7/26/02, 12.6m)
	Top 2	Harry Potter And The Chamber Of Secrets (11/22/02, 7.2m)	Harry Potter And The Sorcerer's Stone (11/16/01, 15.9m)	Incredibles (11/5/04, 11.3m)
	Top 3	Runaway Bride (7/30/99, 6.9m)	Finding Nemo (5/30/03, 11.6)	Bruce Almighty (5/23/03, 11.3m)
	Top 4-6	Sweet Home Alabama, America's Sweethearts, Erin Brockovich	Toy Story 2, Monsters, Inc., How The Grinch Stole Christmas	Ace Ventura: When Nature Calls, Waterboy, Big Daddy
	Effect on Crime	-0.0042 (0.0061) (6PM-12AM) 0.0057 (0.0072) (12AM-6AM)	-0.0043 (0.0042) (6PM-12AM) -0.0044 (0.0058) (12AM-6AM)	-0.0091* (0.0052) (6PM-12AM) -0.0089 (0.0066) (12AM-6AM)
5-7 Mildly Violent Movies	Top 1	Save The Last Dance (1/12/01, 4.9m)	Harry Potter and The Prisoner Of Azkaban (6/4/04, 15.1m)	Spider-Man (5/3/02, 19.8m)
	Top 2	Double Jeopardy (9/24/99, 4.6m)	Planet Of The Apes (7/27/01, 12.1m)	Lost World: Jurassic Park (5/23/97, 15.7)
	Top 3	Absolute Power (2/14/97, 3.7m)	Mummy Returns (5/4/01, 12.0m)	Matrix Reloaded (5/16/03, 15.2m)
	Top 4-6	Random Hearts, Unfaithful, Enough	Independence Day, Men In Black, Day After Tomorrow	Spider-Man 2, X2: X-Men, Star Wars: Episode 2
	Effect on Crime	0.0070 (0.0110) (6PM-12AM) -0.0162 (0.0149) (12AM-6AM)	-0.0104** (0.0046) (6PM-12AM) -0.0175*** (0.0057) (12AM-6AM)	-0.0114*** (0.0039) (6PM-12AM) -0.0172*** (0.0054) (12AM-6AM)
8-10 Strongly Violent Movies	Top 1	Missing (11/28/03, 1.7m)	Passion Of The Christ (2.27/04, 13.5m)	Hannibal (2/9/01, 10.2m)
	Top 2	Nurse Betty (9/8/00, 1.3m)	Passion Of The Christ (3/5/04, 8.5m)	Jurassic Park 3 (7/20/01, 9.0m)
	Top 3	Copycat (11/3/95, 1.3m)	Air Force One (7/25/97, 8.1m)	Scary Movie (7/7/00, 7.9m)
	Top 4-6	Jade, In Dreams, A Rich Man's Wife	Ransom, Sleepy Hollow, General's Daughter	Bad Boys 2, Troy, Terminator 3
	Effect on Crime	0.0808* (0.0424) (6PM-12AM) 0.0730 (0.0598) (12AM-6AM)	-0.0106 (0.0079) (6PM-12AM) -0.0217** (0.0088) (12AM-6AM)	-0.0135*** (0.0047) (6PM-12AM) -0.0135** (0.0064) (12AM-6AM)

Notes: The audience numbers are obtained from daily boxoffice revenue divided by the average price per ticket. The ratings of movie violence in Column (1) are from www.kids-in-mind.com. Column (2) reports the average share of audience captured by movies with violence rating j . Columns (3) through (5) report the title (Column (3)), the weekend (Column (4)), and the weekend audience (Column (5)) for the 3 movies with highest weekend sales in violence category j . The last category includes movies for which the violence rating is not available.

Table 10. Test of Sobriety -- Effect of Alcohol Consumption

Specification:	Instrumental Variable Regressions						
Dep. Var.:	Log (Number of Assaults of a Type in Day t in Time Window)						
	(1)	(2)	(3)	(4)	(5)	(6)	(7)
Audience Of Strongly Violent Movies (in millions of people in day t)	-0.0133 (0.0087)	-0.0242 (0.0115)**	-0.0135 (0.0056)**	-0.015 (0.0072)**	-0.0162 (0.0245)	-0.0049 (0.0202)	-0.0049 (0.0042)
Audience Of Mildly Violent Movies (in millions of people in day t)	-0.0171 (0.0077)**	-0.0221 (0.0108)**	-0.0098 (0.0046)**	-0.0195 (0.0063)***	-0.0135 (0.0204)	-0.0114 (0.0195)	-0.0089 (0.0042)**
Audience Of Non-Violent Movies (in millions of people in day t)	-0.0064 (0.0083)	-0.0079 (0.0112)	-0.0061 (0.0049)	-0.0042 (0.0064)	0.0011 (0.0213)	0.0048 (0.0190)	-0.0076 (0.0045)*
Type of Crime	Assaults Involving Alcohol or Drugs		Assaults Not Involving Alcohol or Drugs		Assaults At A Bar		DUI Arrests
Time of Day	6PM-12AM	12AM-6AM next day	6PM-12AM	12AM-6AM next day	6PM-12AM	12AM-6AM next day	Same Day
Control Variables:							
Full Set of Controls	X	X	X	X	X	X	X
Predicted Audience Using Next Week's Audience	X	X	X	X	X	X	X
N	N = 1563	N = 1560	N = 1563	N = 1562	N = 1518	N = 1515	N = 1563

Notes: An observation is a Friday, Saturday, or Sunday over the years 1995-2004. The total number of assaults is computed using all agencies with population of at least 25,000 and reporting crimes in at least 300 days in the year. The audience numbers are obtained from daily box-office revenue divided by the average price per ticket. The standard ratings of violent movies are from www.kids-in-mind.com. The audience of strongly violent movies is the audience of all movies with a violence rating 8-10. The audience of mildly violent movies is the audience of all movies with a violence rating 5-7. The specifications are IV regressions with the log(number of assault occurring in day t) as dependent variable. The audience numbers are instrumented using the predicted audience numbers based on next weekend's audience. Details on the construction of the predicted audience numbers are in the text. Robust standard errors clustered by week in parenthesis.

* significant at 10%; ** significant at 5%; *** significant at 1%

Table 11. Examples of Studies of Media Effects on Violence in Psychology

Paper	Exposure to violence (Type of movie)	Control Group	Subjects	Location	Sample Size	Measure of Violence t	Treatment Group t_T	Control Group t_C
	(1)	(2)	(3)	(4)	(5)	(6)	(7)	(8)
Laboratory Experiments								
Lovaas (1961)	5-min. Extract from "Rassling Match" -- cartoon violence	5-min. Non-Violent Clip from "Bear Facts"	Children of Nursery School	Playroom	10 + 10	Time Spent Playing with Aggressive Doll (hits other doll)	98.2	58.6
Bandura, Ross, and Ross (1963)	10-min. Scenes of Aggression of Doll	No Movie	Children of Nursery School	Playroom	24 + 24	Aggression toward Doll	91.5	54.3
Geen and O'Neal (1969)	7-min. Prizefight Scene from "Champion" + 2 min. White Noise	7-min. Scenes on Non-violent Sport + 2 min. White Noise	College Students	Laboratory	12 + 12	Intensity Electric Shock Inflicted on Other Subject	22.2	10.3
	7-min. Prizefight Scene from "Champion"	7-min. Scenes on Non-violent Sport					12.7	14.7
Bushman (1995)	15-min. Violent Scenes from "Karate Kid III"	15-min. non-violent scenes from "Gorillas in The Mist"	College Students	Laboratory	738	Level of Noise Inflicted On Other Subject For Slow Answer	4.6	3.9
Josephson (1987)	14-min. Scenes of Killing of Police Officer and SWAT team in Action	14-min. Scenes of Motorcross Bike-Racing Team	Grades 2-3, Boys	School	396	Aggression in 9 Min. of Floor Hockey Game	6.6	3.6
Leyens et al. (1975)	Showing of 5 Violent Movies On 5 Consecutive Days	Showing of 5 Non-Violent Movies On 5 Consecutive Days	Juvenile Detention	Cottage in Belgium	85	% Committing Phys. Aggression In Evening After Movie	4.0%	.2%
						% Committing Phys. Aggression At Noon Day After Movie	2.1%	1.5%
Surveys								
Johnson et al. (2002)	High (Self-reported) Television Viewing at Age 14 (≥ 3 hrs./day)	Low (Self-reported) Television Viewing at Age 14 (< 1 hrs./day)	Random Sample	NY State	707	% Committing Assaults Causing Injury, at Age 16-22	25.3%	5.7%

Notes: Calculations of effects on violence are by the authors based on data from the papers cited. Columns (7) and (8) report the level of violence in the Treatment and Control group. The difference is always significant at the 5% level, except for the second comparison in the Geen and O'Neal (1969) paper and the second comparison in Leyens et al. (1975).

Appendix Table 1. Movie Blockbusters by Violence Level

Violence Rating (1)	Fraction Audience (2)	Title of Blockbuster (3)	Weekend Date (4)	Weekend Theater Audience (5)
0	0.013	Birdcage	3/8/1996	4,134,803
		You've Got Mail	12/18/1998	3,928,944
		You've Got Mail	12/25/1998	3,859,694
1	0.038	Runaway Bride	7/30/1999	6,900,700
		Erin Brockovich	3/17/2000	5,220,494
		Contact	7/11/1997	4,484,729
2	0.115	Liar Liar	3/21/1997	6,845,975
		Toy Story	11/24/1995	6,698,992
		Space Jam	11/15/1996	6,228,174
3	0.161	Shrek 2	5/21/2004	17,397,404
		Finding Nemo	5/30/2003	11,650,367
		Shrek 2	5/28/2004	11,621,637
4	0.134	Harry Potter And The Sorcerer's Stone	11/16/2001	15,953,113
		Harry Potter And The Chamber Of Secrets	11/15/2002	15,207,829
		Austin Powers In Goldmember	7/26/2002	12,576,797
5	0.132	Harry Potter And The Prisoner Of Azkaban	6/4/2004	15,086,533
		X2: X-Men United	5/2/2003	14,188,844
		Star Wars: Episode 2 - Attack Of The Clones	5/17/2002	13,774,150
6	0.160	Spider-Man	5/3/2002	19,766,629
		Spider-Man 2	7/2/2004	14,195,850
		Spider-Man	5/10/2002	12,292,173
7	0.112	Lost World: Jurassic Park	5/23/1997	15,715,204
		Matrix Reloaded	5/16/2003	15,219,637
		Lord Of The Rings: Return Of The King	12/19/2003	12,044,729
8	0.068	Jurassic Park 3	7/20/2001	8,970,255
		Air Force One	7/25/1997	8,089,870
		Scary Movie	7/7/2000	7,856,525
9	0.048	Bad Boys 2	7/18/2003	7,715,184
		Saving Private Ryan	7/24/1998	6,519,425
		Sleepy Hollow	11/19/1999	5,917,415
10	0.020	Passion Of The Christ	2/27/2004	13,502,107
		Hannibal	2/9/2001	10,247,901
		Passion Of The Christ	3/5/2004	8,574,364
Missing		A Perfect Murder	6/5/1998	3,542,794
		A Perfect Murder	6/12/1998	2,404,636
		Demon Knight	1/13/1995	2,303,346

Notes: The audience numbers are obtained from daily boxoffice revenue divided by the average price per ticket. The ratings of movie violence in Column (1) are from www.kids-in-mind.com. Column (2) reports the average share of audience captured by movies with violence rating *j*. Columns (3) through (5) report the title (Column (3)), the weekend (Column (4)), and the weekend audience (Column (5)) for the 3 movies with highest weekend sales in violence category *j*. The last category includes movies for which the violence rating is not available.

Appendix Table 2. The Effect of Movie Violence on Same-Day Assaults, By Age Group and Gender

Specification: Dep. Var.:	Instrumental Variable Regressions							
	Log (Number of Assaults in Day t in Time Window)							
	(1)	(2)	(3)	(4)	(5)	(6)	(7)	(8)
Audience Of Strongly Violent Movies (in millions of people in day t)	-0.0153 (0.0068)**	-0.017 (0.0081)**	-0.0078 (0.0067)	-0.0203 (0.0094)**	-0.0144 (0.0074)*	-0.0349 (0.0112)***	0.0005 (0.0078)	-0.0188 (0.0087)**
Audience Of Mildly Violent Movies (in millions of people in day t)	-0.0123 (0.0058)**	-0.0199 (0.0073)***	-0.0048 (0.0059)	-0.0158 (0.0075)**	-0.0128 (0.0060)**	-0.039 (0.0104)***	-0.0029 (0.0068)	-0.0109 (0.0074)
Audience Of All Movies (in millions of people in day t)	-0.0056 (0.0061)	-0.0099 (0.0080)	-0.0031 (0.0060)	-0.0028 (0.0075)	-0.0063 (0.0063)	-0.0169 (0.0112)	0.0024 (0.0071)	-0.0076 (0.0076)
Age Group of Criminal	18-29	18-29	30-44	30-44	All	All	All	All
Gender of Criminal	All	All	All	All	Male	Male	Female	Female
Time of Day	6PM-12AM	12AM-6AM next day	6PM-12AM	12AM-6AM next day	6PM-12AM	12AM-6AM next day	6PM-12AM	12AM-6AM next day
Control Variables:								
Full Set of Controls	X	X	X	X	X	X	X	X
Predicted Audience Using Next Week's Audience	X	X	X	X	X	X	X	X
N	N = 1563	N = 1562	N = 1563	N = 1562	N = 1563	N = 1562	N = 1563	N = 1562

Notes: An observation is a Friday, Saturday, or Sunday over the years 1995-2004. The total number of assaults is computed using all agencies with population of at least 25,000 and reporting crimes in at least 300 days in the year. The audience numbers are obtained from daily box-office revenue divided by the average price per ticket. The standard ratings of violent movies are from www.kids-in-mind.com. The audience of strongly violent movies is the audience of all movies with a violence rating 8-10. The audience of mildly violent movies is the audience of all movies with a violence rating 5-7. The specifications are IV regressions with the log(number of assault occurring in day t) as dependent variable. The audience numbers are instrumented using the predicted audience numbers based on next weekend's audience. Details on the construction of the predicted audience numbers are in the text. Robust standard errors clustered by week in parenthesis.

* significant at 10%; ** significant at 5%; *** significant at 1%

Appendix Table 3. Test of Catharsis Using IMDB Data on Movie Ratings by Young Males

Specification: Dep. Var.:	Instrumental Variable Regressions					
	Log (Number of Assaults in Day t in Time Window)					
	(1)	(2)	(3)	(4)	(5)	(6)
Audience Of Movies Highly Liked by Young Males (IMDB) (in millions of people in day t)	-0.0059 (0.0043)	-0.0128 (0.0040)***	-0.0168 (0.0054)***	-0.0001 (0.0045)	-0.0066 (0.0046)	-0.0119 (0.0060)**
Audience Of Movies Liked by Young Males (IMDB) (in millions of people in day t)	-0.0026 (0.0042)	-0.0094 (0.0042)**	-0.0145 (0.0053)***	0.0026 (0.0040)	-0.0039 (0.0038)	-0.0113 (0.0050)**
Audience Of Movies Not Liked by Young Males (IMDB) (in millions of people in day t)	-0.0045 (0.0061)	-0.0049 (0.0059)	-0.0015 (0.0072)			
Audience Of Strongly Violent Movies (in millions of people in day t)				-0.0066 (0.0067)	-0.0075 (0.0068)	-0.0048 (0.0085)
Audience Of Mildly Violent Movies (in millions of people in day t)				-0.0063 (0.0064)	-0.006 (0.0061)	-0.0072 (0.0074)
Theater Audience Of Non-Violent Movies (in millions of people in day t)				-0.0025 (0.0062)	-0.0023 (0.0060)	0.0051 (0.0071)
Time of Day	6AM-6PM	6PM-12AM	12AM-6AM next day	6AM-6PM	6PM-12AM	12AM-6AM next day
Control Variables:						
Full Set of Controls	X	X	X	X	X	X
Audience Instrumented With Predicted Audience Using Next Week's Audience	X	X	X	X	X	X
N	N = 1563	N = 1563	N = 1562	N = 1563	N = 1563	N = 1562

Notes: An observation is a Friday, Saturday, or Sunday over the years 1995-2004. The total number of assaults is computed using all agencies with population of at least 25,000 and reporting crimes in at least 300 days in the year. The audience numbers are obtained from daily box-office revenue divided by the average price per ticket. We divide movies into thirds using the fraction of raters of a movie on IMDB that are male and of age 18-29. Movies liked by Young Males are defined as movies in the mid third of this distribution. Movies strongly liked by Young Males are defined as movies in the top third of this distribution. The standard ratings of violent movies are from www.kids-in-mind.com. The audience of strongly violent movies is the audience of all movies with a violence rating 8-10. The audience of mildly violent movies is the audience of all movies with a violence rating 5-7.

The specifications are IV regressions with the log(number of assault occurring in day t) as dependent variable. The audience numbers are instrumented using the predicted audience numbers based on next weekend's audience. Details on the construction of the predicted audience numbers are in the text. Robust standard errors clustered by week in parenthesis.

* significant at 10%; ** significant at 5%; *** significant at 1%